

## ForScore Dongle Instructions

**ForScore** can support a hardware license on a 'dongle', rather than the normal license which is tied to a specific computer..

A dongle looks a bit like a USB thumb drive, but is specialized for program protection and cannot be used for general data storage.



With a dongle, a club can share scoring duties amongst a number of computers just by passing the dongle to the next guy. The “program activation” that a normal ForScore license requires is *not necessary* with a dongle license.

### Using the dongle requires

1. Installing the drivers for the dongle
2. Inserting the dongle in an available USB port (and correctly clicking through the wizard, if it appears).
3. Starting ForScore using the **/dongle** switch.

**WARNING:** If you lose a dongle, the replacement cost will be that of your **original license plus the hardware cost of the dongle.**

If a dongle becomes defective and you return it postpaid to Beach Bunny Software, it will be replaced at no charge.

**64-bit Vista and Windows 7 Note:** 64-bit Vista requires version 1.03 of the FSdongle driver installer (April, 2009) or later. Windows 7 (32-bit or 64-bit) requires version 1.05 of the FSdongle driver installer (August, 2009) or later.

## Steps for using the dongle:

### Step 1. Installing Drivers – **DO NOT INSERT THE DONGLE YET!**

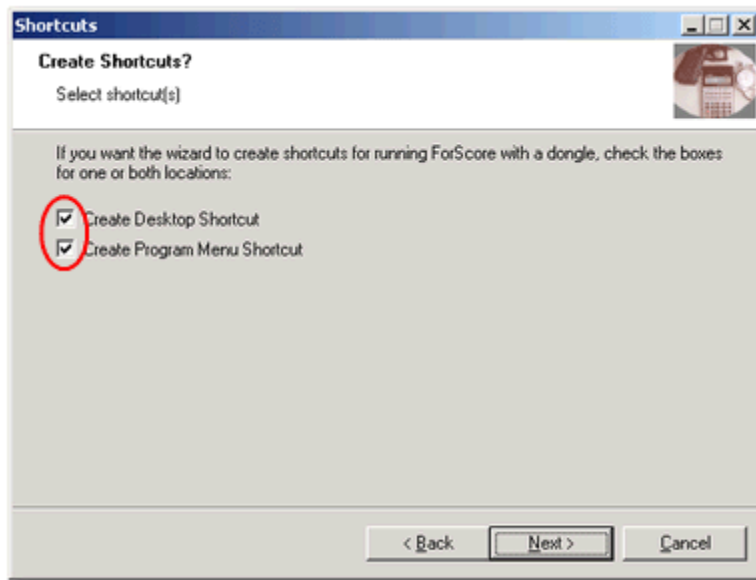
#### a. Windows versions not including 64-bit Vista

If you use the installation program to install **ForScore**, the dongle drivers should be installed automatically. But the wizard can create shortcuts for you, and can reinstall the drivers if they didn't get correctly installed.

If you copy the **ForScore** folder to another computer, or run **ForScore** from a thumb drive, you'll need to install the drivers manually on each computer on which you're going to run the software with a dongle.

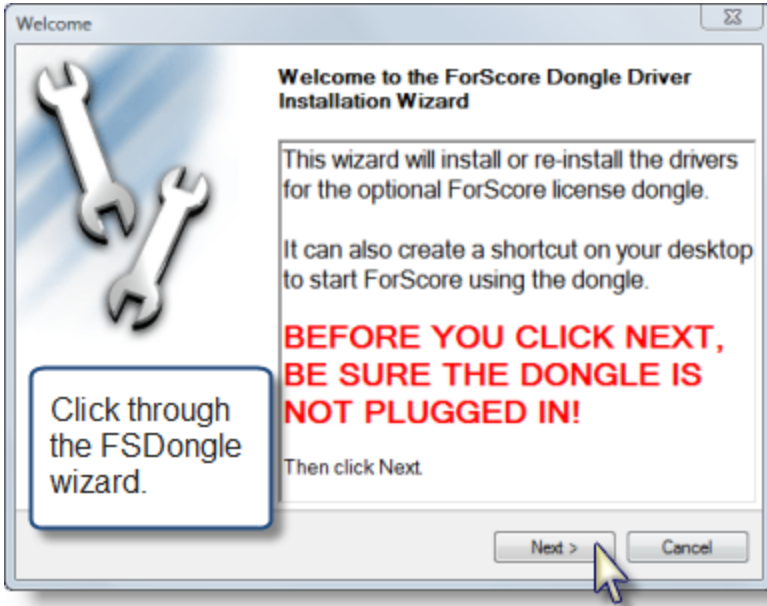
In the **ForScore** program folder (by default c:\program files\forscore) is a driver installation program called **FSdongle.exe**. Run this program to install the drivers. If you're using Windows 98 or Me, you'll need to reboot your computer after installing the drivers. **FSdongle.exe** can also be run from the CD that came with your dongle.

The FSdongle wizard also gives you the option of creating additional shortcuts on your desktop and/or Programs menu to start **ForScore** with the /dongle switch.

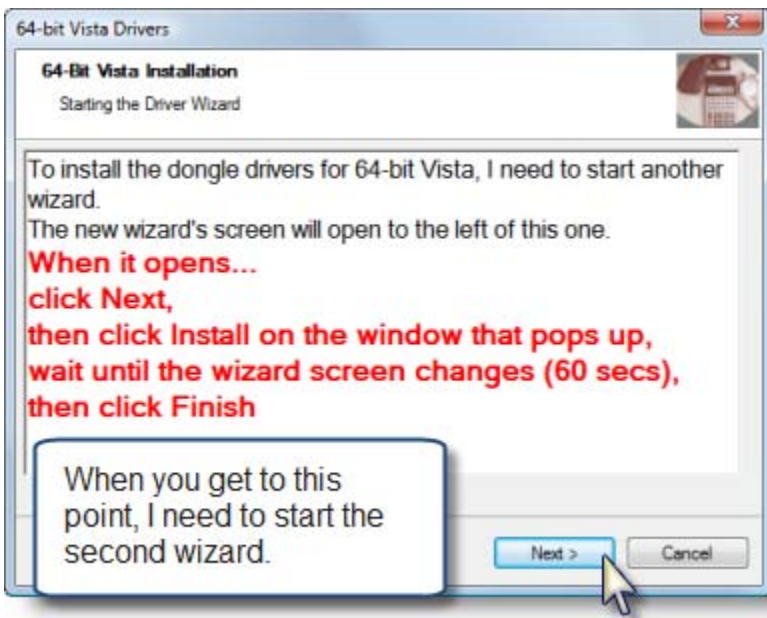


**b. Installing drivers: 64-bit Windows Vista and any version of Windows 7**

32-bit Vista computers install the dongle drivers the same as earlier versions of Windows. But for 64-bit Vista computers or Windows 7 computers, *you must use the installation wizard (fsdongle.exe) version 1.03 (Vista) or 1.05 (Win 7) or later.* It starts the same way it will start for other versions of Windows.

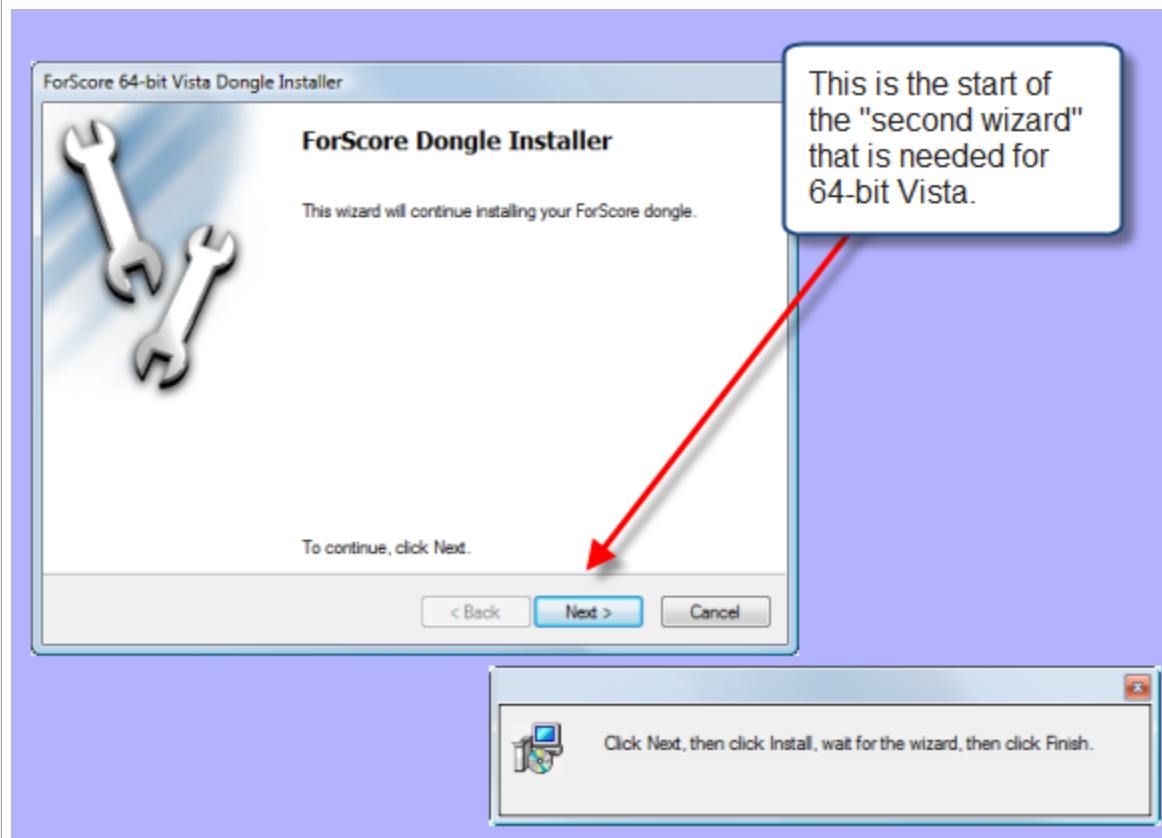


**NOTE:** for 64-bit Vista computers or Windows 7 computers, half way through the fsdongle.exe wizard, *another wizard needs to start.*

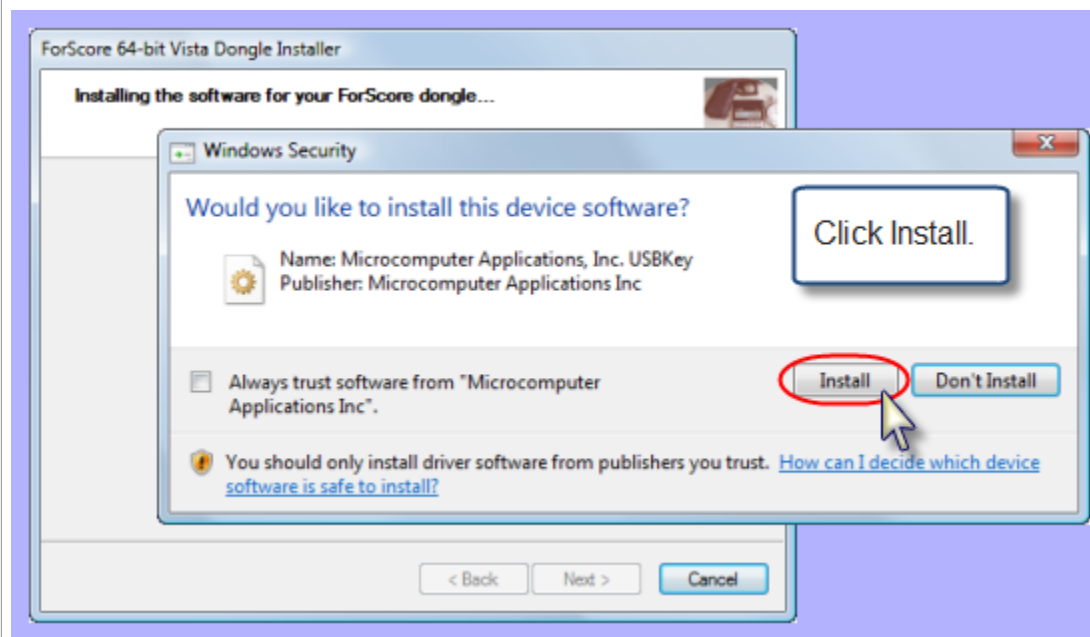


## Installing drivers: 64-bit Windows Vista and Windows 7 (continued)

Click Next to start the second wizard.

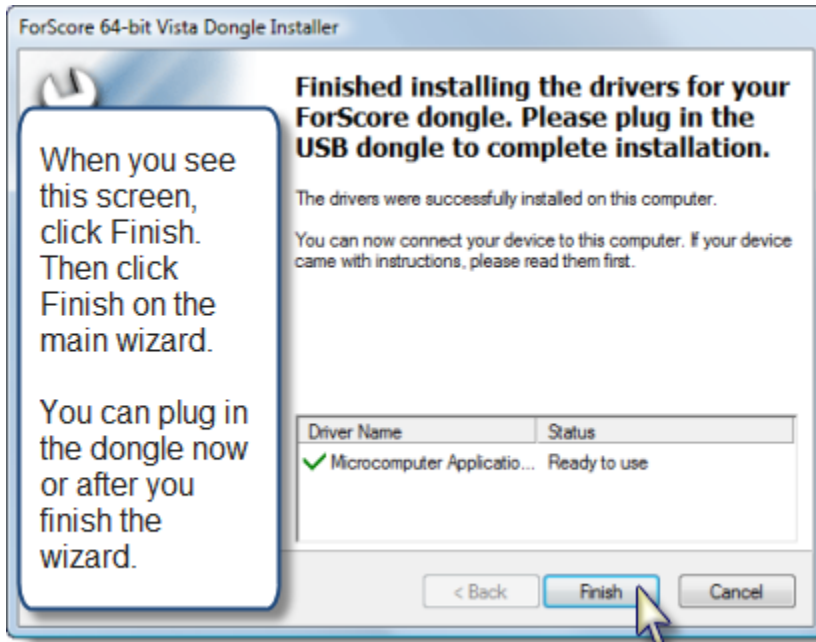


A driver installation message will appear. Click **Install**.

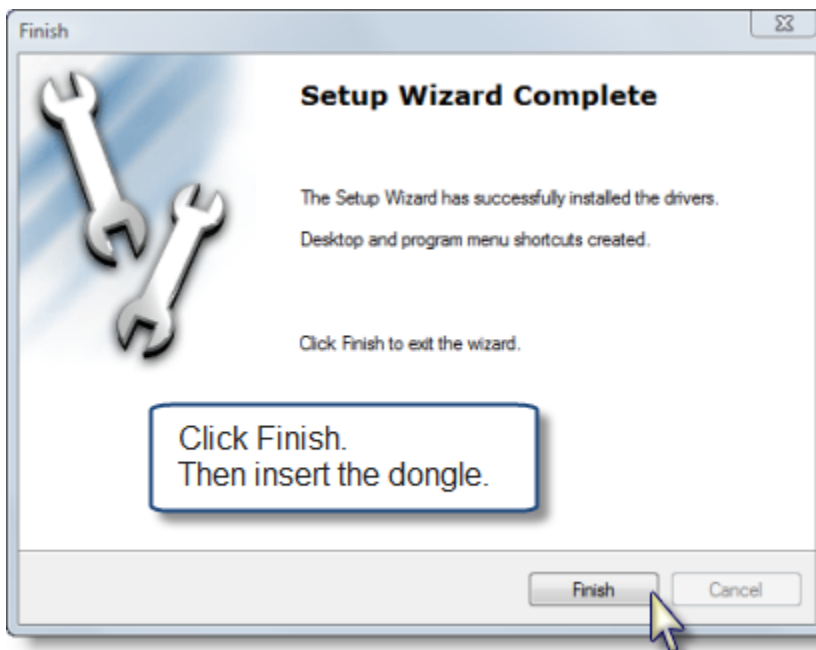


## Installing drivers: 64-bit Windows Vista and Windows 7 (continued)

Let the wizard continue (30 to 60 seconds). Then finish the left-hand wizard.



And close the main wizard. You can plug in your dongle after you click Finish on either of these wizard screens.



## Step 2. Insert Dongle

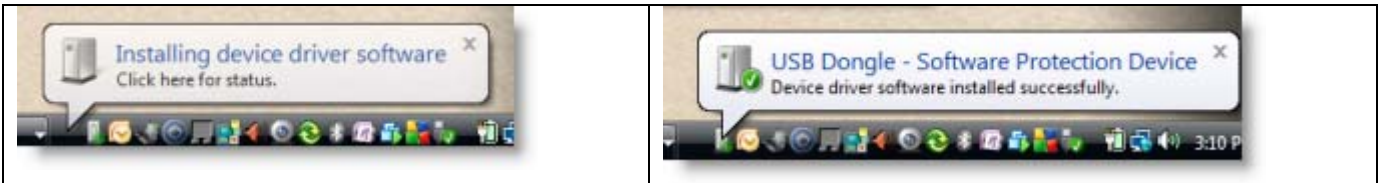
### **Be sure you've installed the dongle's drivers first!**

#### **a. Windows 98 and Windows 2000**

On operating systems prior to Windows XP, you should just see a brief message the first time you insert the dongle, assuming you've correctly installed the drivers.

#### **b. Windows Vista (64-bit) and Windows 7.**

After you've completed the wizard as shown in Step 1, insert the dongle. You may briefly see a New Hardware process in the lower right corner of your screen. Then the dongle is ready for use.



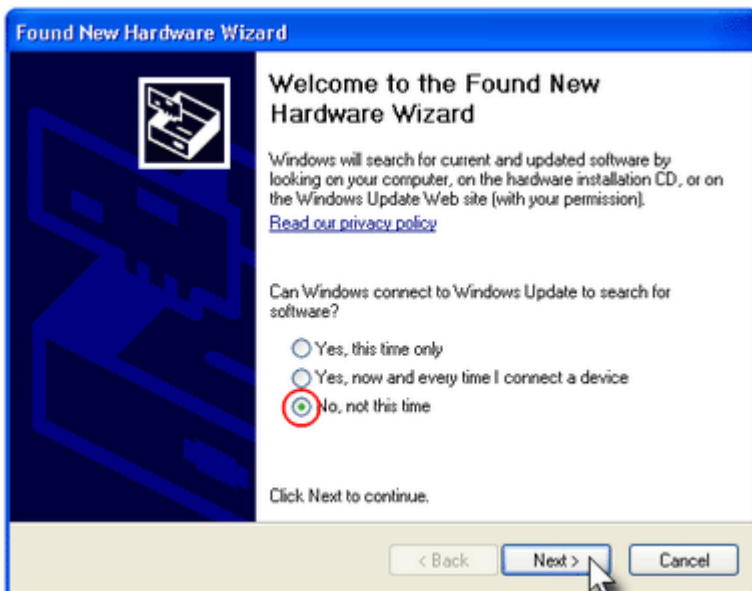
#### **c. Windows Vista (32-bit).** Please skip ahead to page 8.

#### **d. Windows XP**

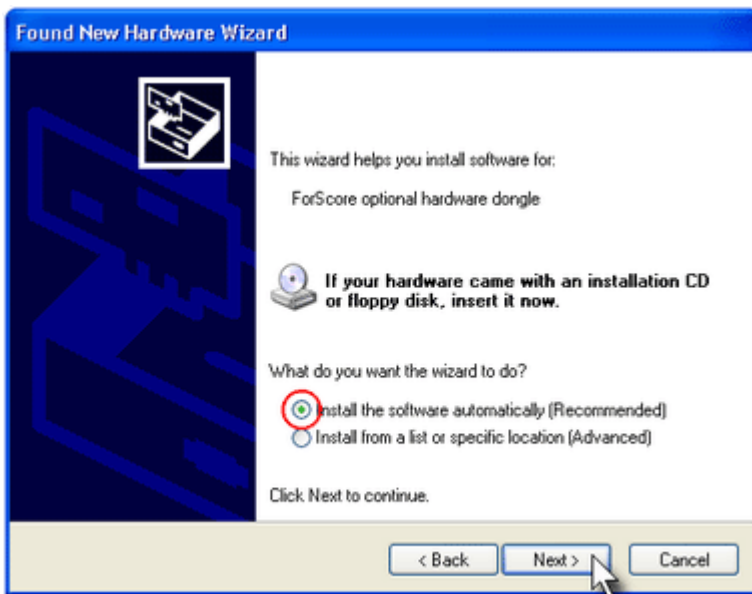
If your computer is running XP, a New Hardware Wizard will open when XP first detects the dongle.

**NOTE:** **Windows XP may open this wizard *each time*** you insert the dongle into a different USB port. If it does, just click through the wizard again using the choices illustrated below.

Click **No**, then **Next**.

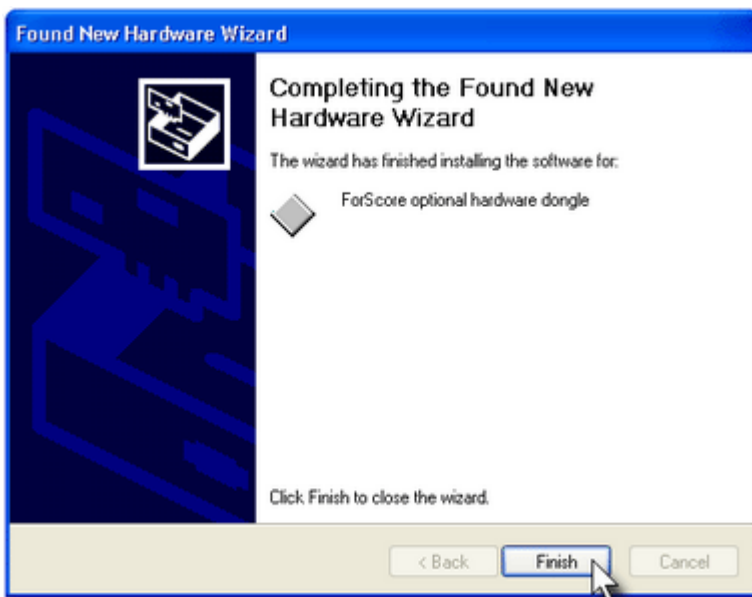


Click **Automatically**, then click **Next**.



The wizard will churn for a few seconds.

Then click **Finish**.

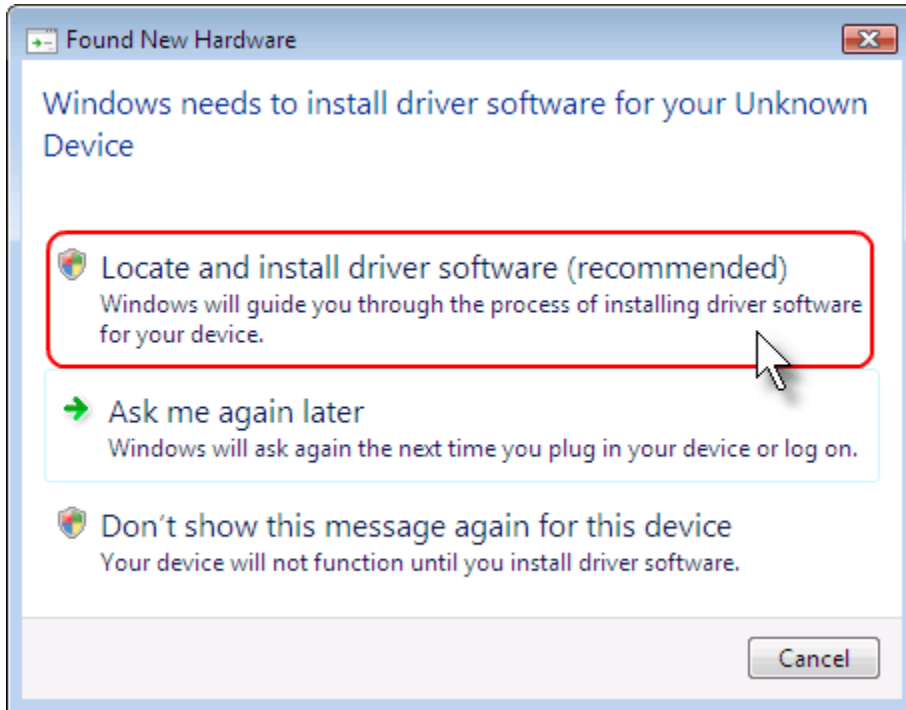


### 32-bit Vista Driver Installation

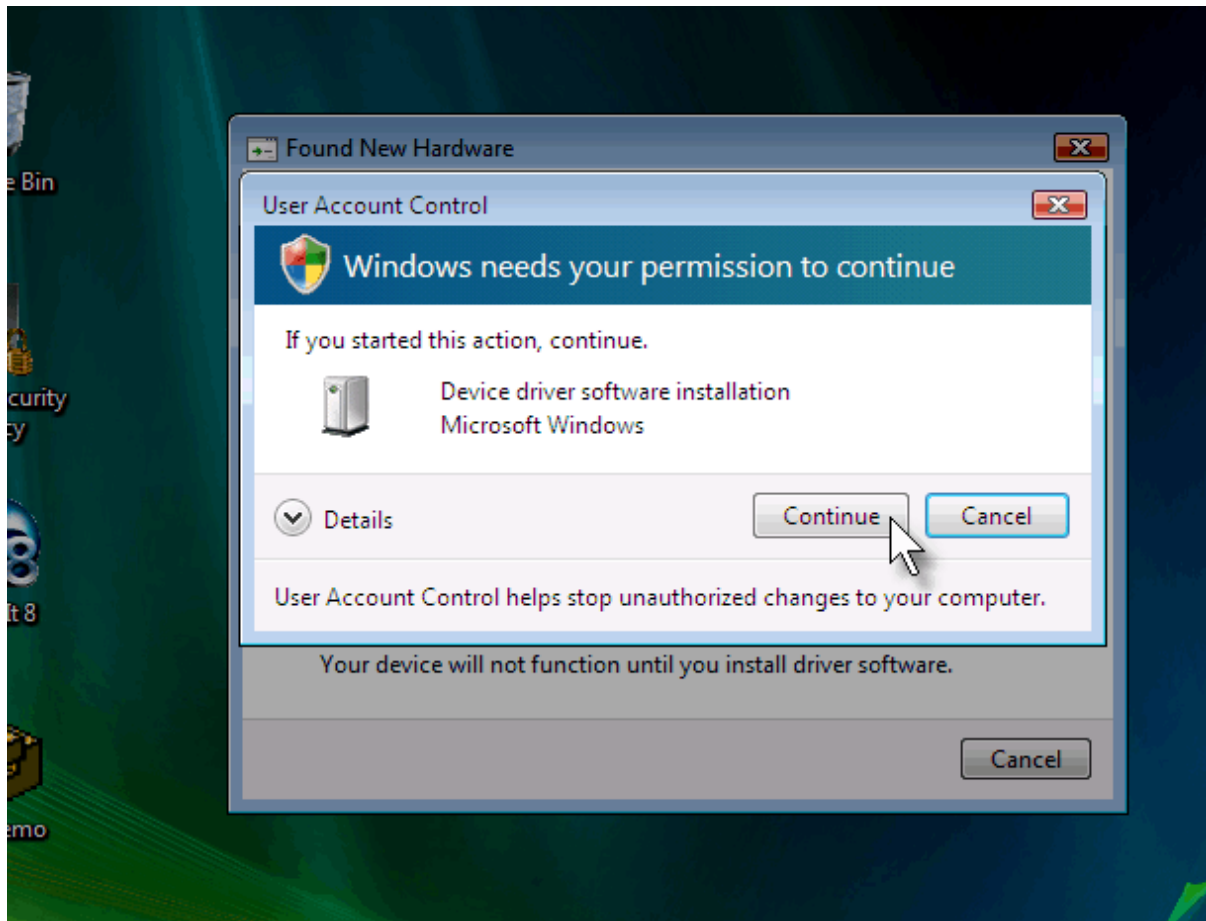
Be sure you've installed the dongle drivers as shown in Step 1.

When you insert the dongle into a computer running Vista, the Found New Hardware wizard will open. Click the top large rectangular button area.

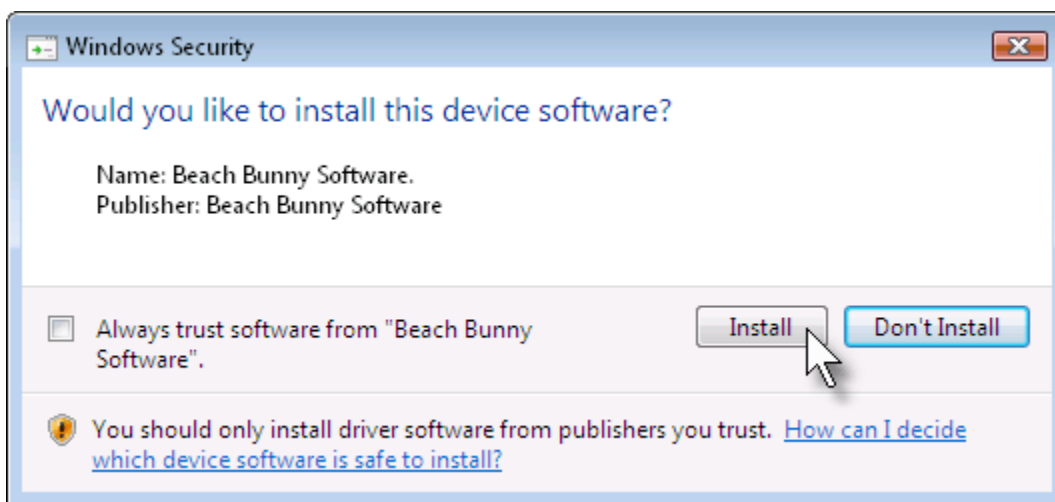
**NOTE:** Windows Vista may open this wizard **each time** you insert the dongle into a different USB port. If it does, just click through the wizard again using the choices illustrated below.



Your screen will dim, and you'll get the **needs your permission** screen. Click **Continue**.



Click **Install**.

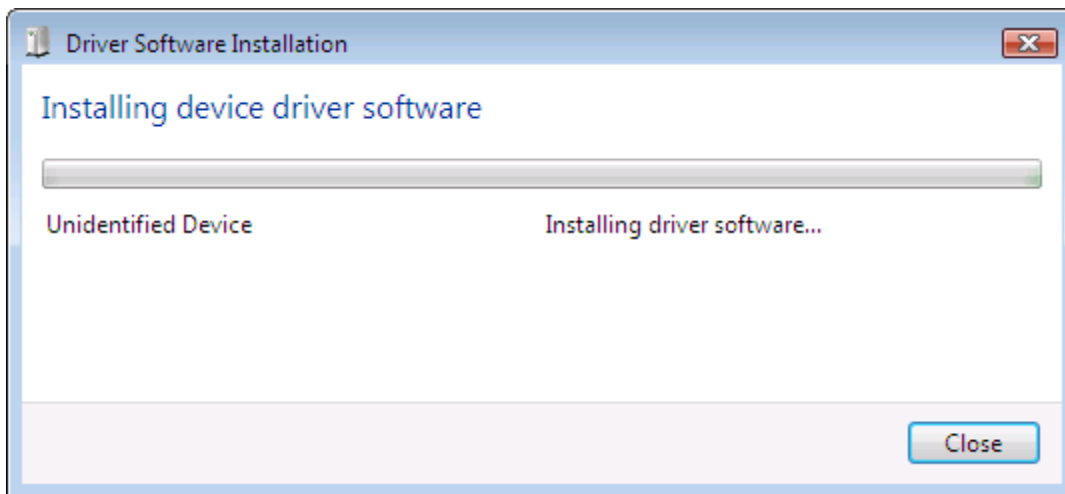


Your computer will churn for a bit.

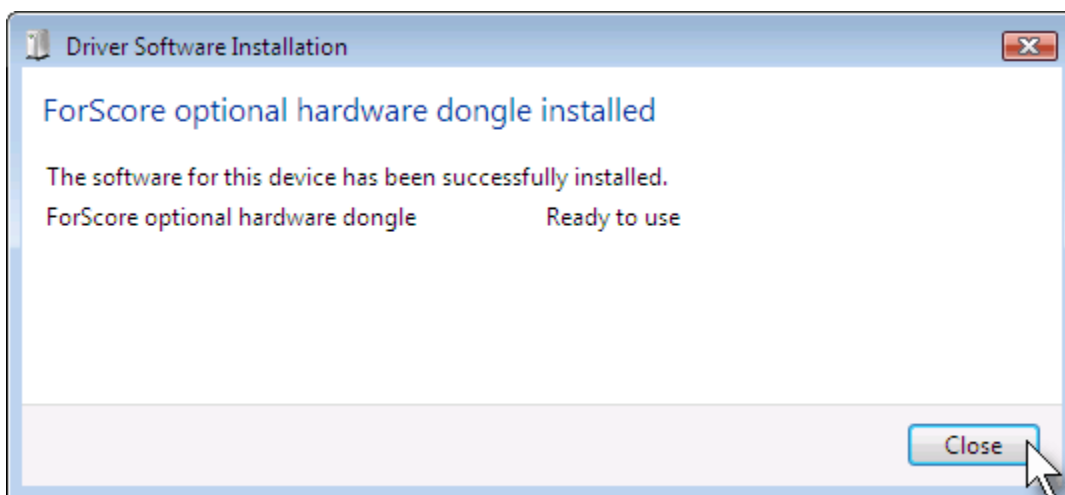
If this icon is on the taskbar, double-click it to bring up the **Installing device driver software** window.



This screen may appear automatically, or you may need to double-click that taskbar icon.



When the driver installation is finished, click **Close**.



### **Step 3. Start ForScore Using the /dongle Switch**

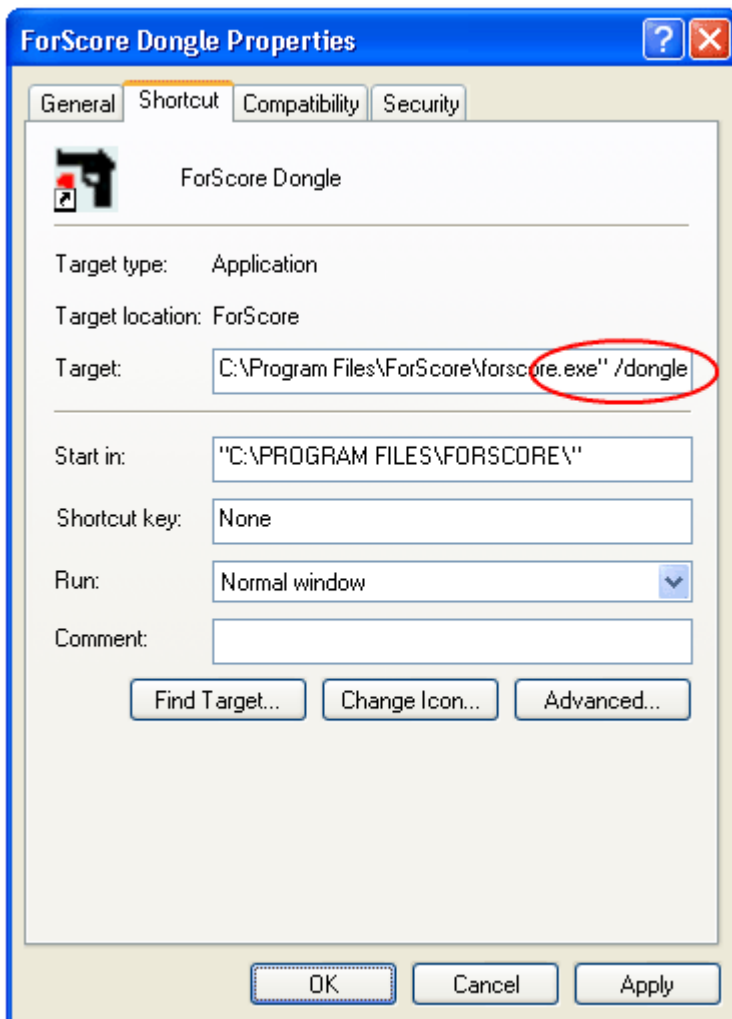
If you used the driver installation wizard, you had the option of having it create dongle-friendly shortcuts for you.

Otherwise, create your own shortcut as shown. (Note that the screen shot doesn't show the quotation mark at the beginning of the command, but it needs to be there.)

ForScore will only look for the dongle license if it is started with the **/dongle** text in the shortcut as illustrated.

### **REMEMBER THIS WHEN YOU CHANGE COMPUTERS!**

Most of my dongle support issues come when people forget to configure a dongle shortcut when they run the software on a new machine.



## Usage Suggestions

Here are a few possibilities:

1. Install **ForScore** on each computer, but do not activate it. When it's Joe's turn to score a match, he copies the data files from the last guy into his ForScore\DATA folder and uses the **/dongle** switch to permit **ForScore** to run.
2. Install **ForScore** on each computer, but do not activate it. Keep your data on a thumb drive. Pass the dongle and the data thumb drive to the guy who's scoring this match. He runs **ForScore** with both the **/data** and **/dongle** switches.
3. Copy the entire **ForScore** installation into a folder on a thumb drive. **Install the drivers for the dongle!** Plug the thumb drive and dongle into the computer. Run ForScore using the **/dongle** switch.

**NOTE:** Reading and writing to a USB drive will be **slower** than writing to your computer's built-in hard drive.

For a club match, that's probably not an issue. Most of the disk activity occurs when you finish a shooter and close the screen where you selected his stages.

For a match where you're using the "Direct" score entry method or barcode, however, the shooter's stages are scanned and calculated after each stage you enter. Because of this and the larger number of stages in a typical sanctioned match, you might find your computer's performance seeming more sluggish.

For a large match, I recommend suggestion #1 – copy the data to the computer's hard drive.

If you have any questions or problems,  
please phone Jane at 805.773.1006 between 9AM and 6PM Pacific time.  
Or post questions on my support forum: <http://forum.beachbunnysoftware.com/>